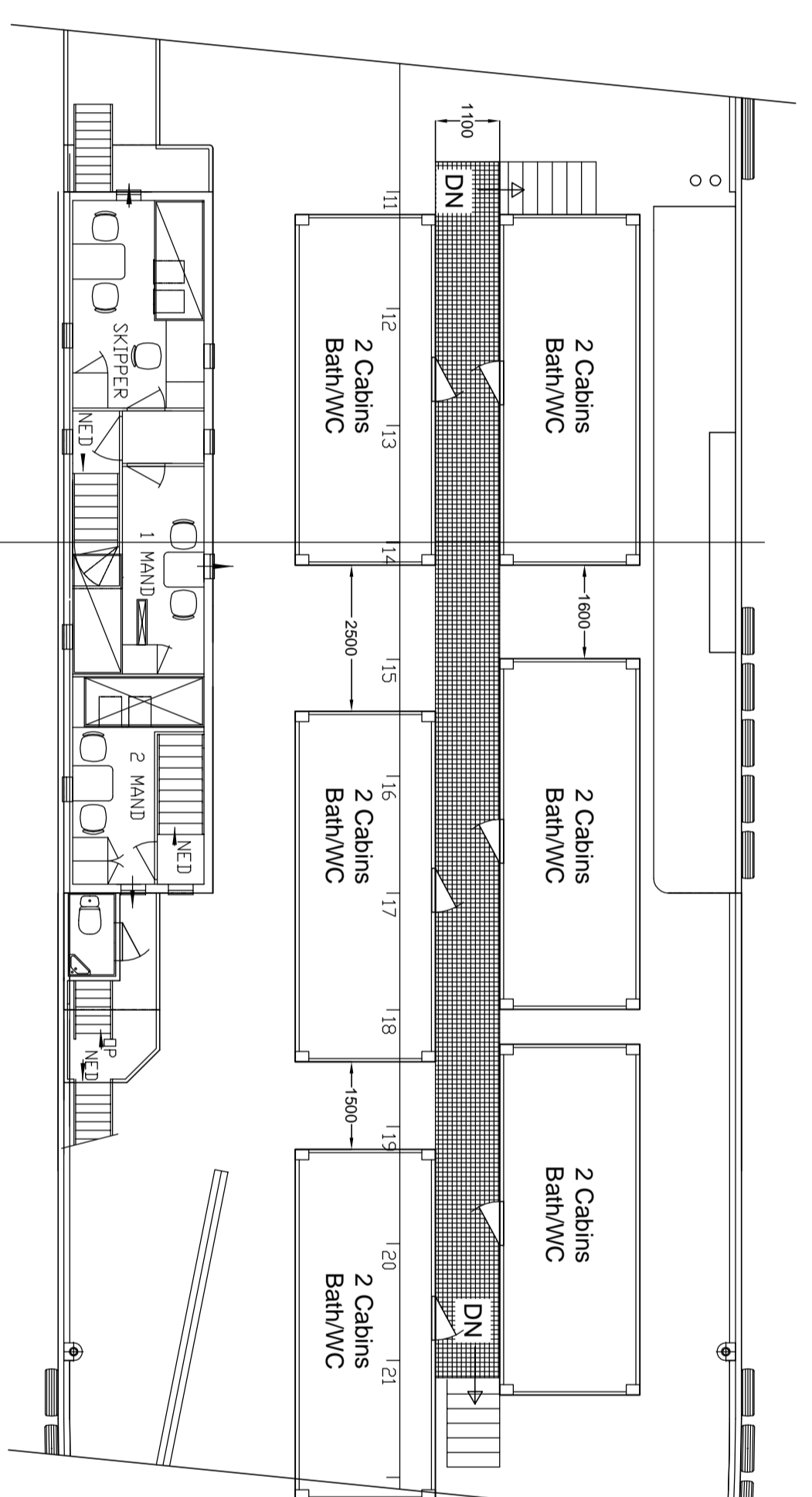
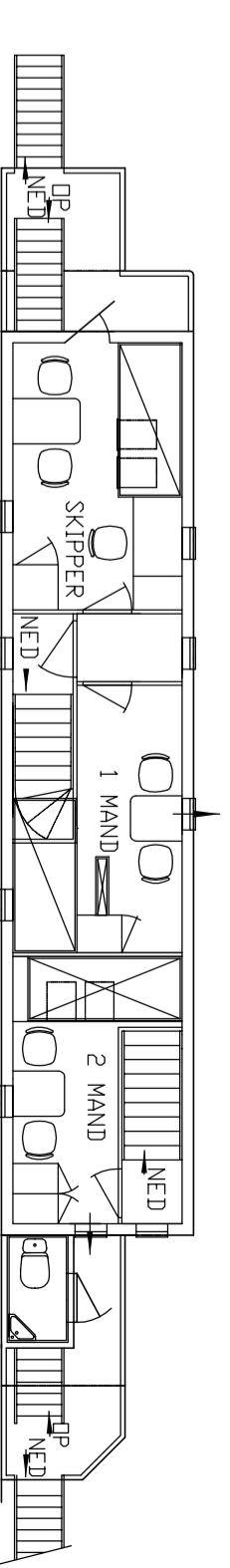


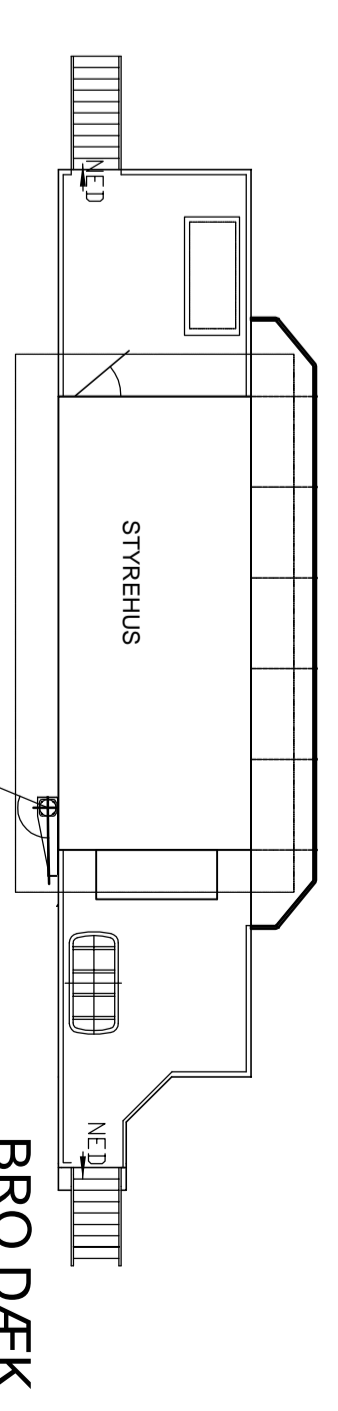
PLATFORM DÆK BB



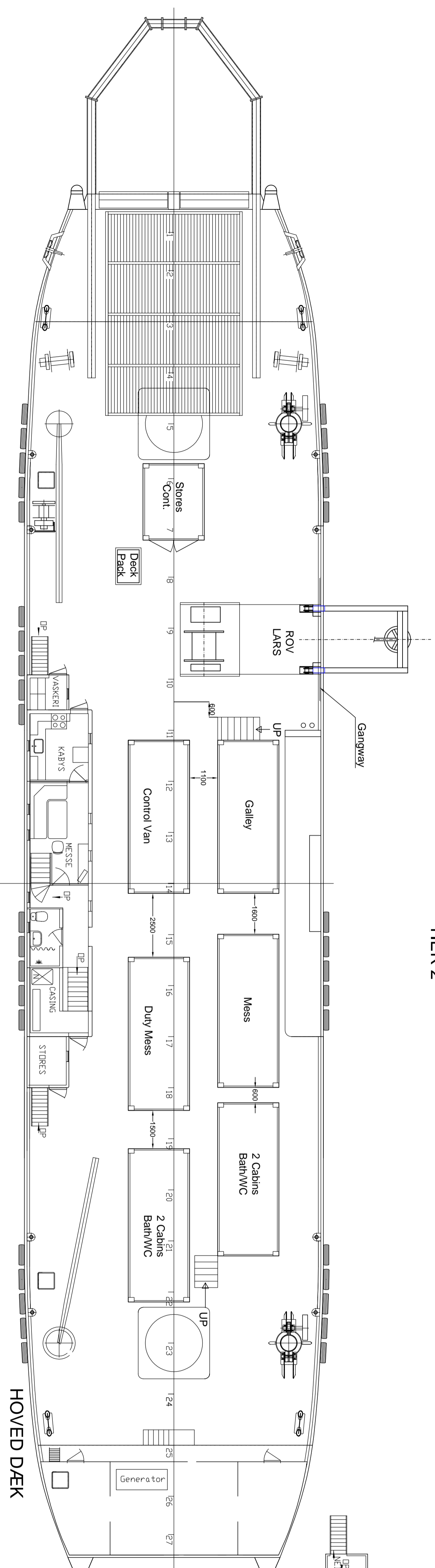
TIER 2



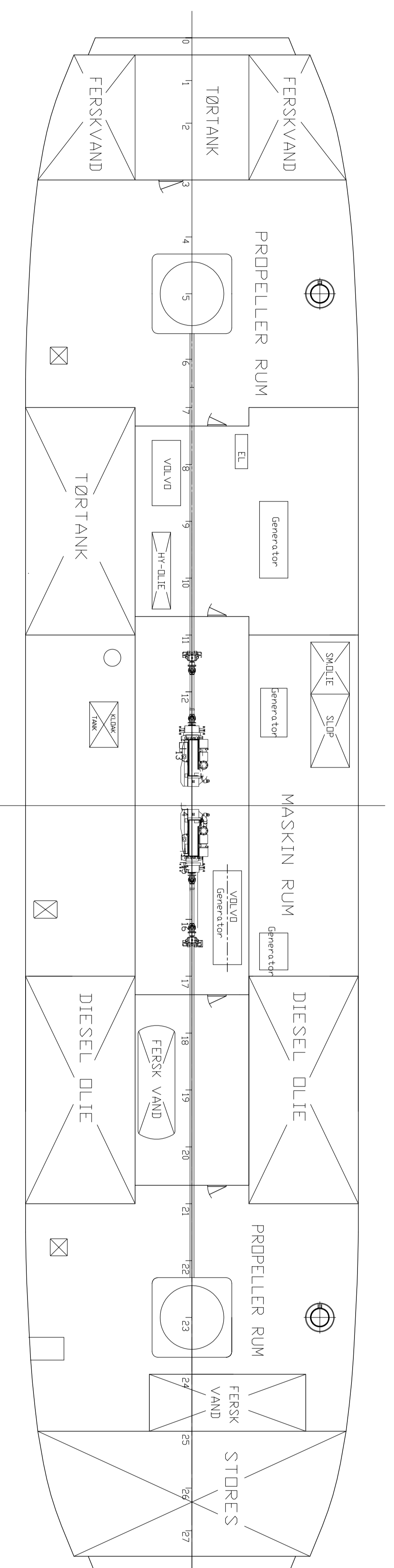
A - D/EK



BRO D/EK



HOVED DÆK



HOVEDDIMENSIONER:

LÆNGDE OVER ALT: 53,96 M.
LÆNGDE I VANDLINIEN: 53,05 M.
BREKKE MOULDED: 11,70 M.
DYBDE MOULDED: 2,40 M.
DYBGANG U.K. KØL: 1,60 M.
DYBGANG U.K. PROPELLER: 2,67 M.

Revision F: 04.01.2016
 Revision E: 24.10.2017
 Revision D: 10.10.2017
 Revision C: 07.08.2017
 Revision B: 11.01.2017
 Revision A: 28.08.2016

CONSULTING NAVAL ARCHITECTS
JENS KRISTENSEN
 GENERAL ARRANGEMENT m/LARS + ROV
 M/V SUSANNE A - IMO No. 9099183

Drawn: MH
 Date: 20.08.2012
 Scale: 1:100
 Drawing no.: JK 336.005.009
 Revision: A B C D E