




J.A. REDERIET

Brå Møllevvej 11 DK 8781 Stenderup Denmark
Tel. +45 75 65 00 94 Fax. +45 75 65 09 94 e-mail: ja@jashipping.com
www.jashipping.com  J.A.Rederiet



OFFSHORE DP1- DIVING – SALVAGE - SUPPORT VESSEL

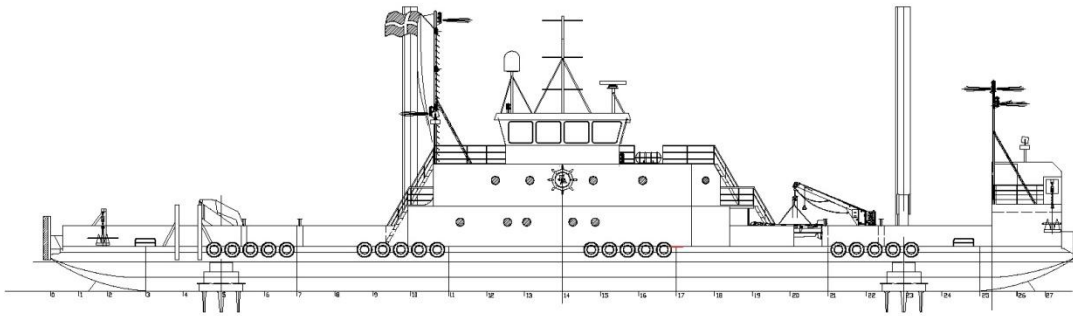
MIRA A

Technical specifications:

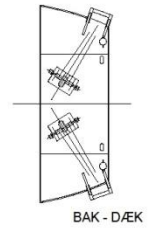
Class:	DMA	Speed and Consumption:	7 knots / 3 m3 per day
	Bureau Veritas Dynapos AM/AT		5 knots / 2 m3 per day
Flag:	Danish		Stand-by / 1 m3 per day
IMO No:	9099171		DP-mode / 2 m3 per day
Call sign:	OZAZ2		
Trading area:	A2 within 50 miles of shore	Deck equipment:	4-point mooring: 2 x bow anchor winch, 600 m wire 2 x bow anchor Delta flipper 1.0 t 2 x stern anchor winch, 600 m wire 2 x stern anchor Delta flipper 1.0 t
Gross Tonnage:	348		Spud legs: 2 x 24 m
Dimensions:	LoA 54.00 m Beam 11.72 m Draft 2.3-2.7 m		Cranes: 1 x 48 t/m hydraulic. 1 x 36 t/m hydraulic.
Main propulsion / machinery:	2 Volvo Penta D16, each 500 HP 2 Voith Schneider propeller		Optional: Ro-Ro ramp aft, length 5.55m, beam 5.90m
Auxiliary engine:	1 x Iveco-Diesel, 100 KVA, 400V50Hz 2 x Iveco-Diesel, 60 KVA, 400V50Hz 1 x Iveco-Diesel, 200 KVA, 400V50Hz		
Cargo area:	Loading cap. Total 250 ts Loading cap. Deck 150 ts Free working deck space 400 sqm Length 45 m Beam 10 m Fuel capacity 100 m ³ Freshwater 30 m ³	Bridge and Communication:	1 x Navis NavDP 4000 (DP1) 1 x Radar Furuno 1 x C-Nav GNSS 3055 DGPS/GLONASS 1 x Simrad MX610 DGPS/GLONASS 1 x Simrad GC80 Gyro compass 1 x Furuno satellite compass 2 x Echosounder Furuno FCV 620 2 x Electronic chart system MaxSea 2x VHF/DSC Sailor RT4822 1 x MF/DSC Sperry HC4500B 1 x VHF Sailor RT2048 1 x Satellite phone V-Sat 1x AIS Furuno FA-150 1x Navtex NX-700 2x Epirb Sailor SE406-II 1 x AIS SART Mc Murdo 2 x Search light 2000 watt
Cargo equipment:	Cargo lash rings on deck		
Accommodation:	Ship's Crew: 2 single cabins 1 double cabin Hirer's Crew: Up to 12 pax in single cabins. Incl. galley and mess room. (Container based)		Optional: USBL Sonardyne Mini Ranger 2

OFFSHORE DP1 – DIVING – SALVAGE- SUPPORT VESSEL

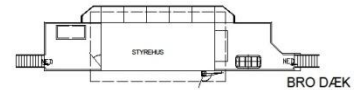
MIRA A



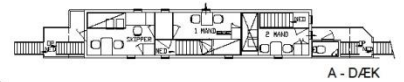
PLATFORM DÆK BB



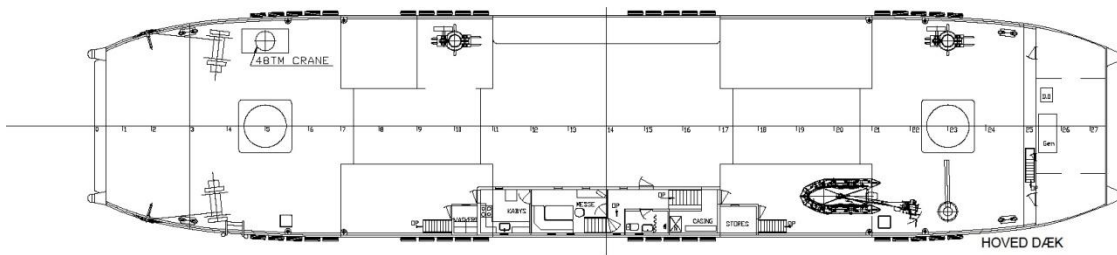
BAK - DÆK



BRO DÆK



A - DÆK



HOVED DÆK

J.A. REDERIET

Brå Møllevvej 11 DK 8781 Stenderup Denmark

Tel. +45 75 65 00 94 Fax. +45 75 65 09 94 e-mail: ja@jashipping.com

www.jashipping.com  J.A.Rederiet

