

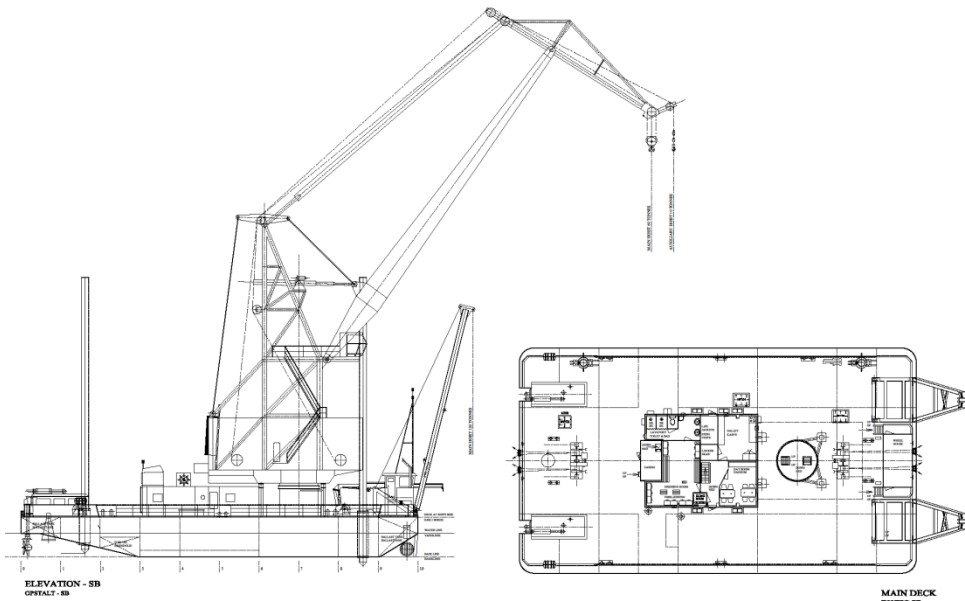


J.A. REDERIET

Brå Møllevvej 11 DK 8781 Stenderup Denmark

Tel. +45 75 65 00 94 Fax. +45 75 65 09 94 e-mail: ja@jashipping.com

www.jashipping.com  J.A.Rederiet



SANNE A

Call Signal: OYFG2

Selfpropelled, Fully Revolving Floating Crane. Spud Leg Fitted. Diving support fitted. 4 point mooring.

Danish flag Danish crew Coastal Trade

Length overall:	36.00 m
Beam extreme:	20.40 m
Depth:	3.60 m
Max draft abt:	2.50 m
GT:	683
NT:	204
DWT:	161
Class:	DMA (Danish Maritime Authority)
Bunker capacity:	50 m ³
Freshwater capacity:	12 m ³

Crane:

Main Hook: 60 t / 17.5 m 50 t / 22.0 m
40 t / 28.0 m 32 t / 32.0 m

Max. lifting height: 35.0 m

Aux. hoist: 10 t / 34.0 m, max height 33.4m

2 pcs A-frames: 2 x 125 tons

Propulsion Engine:

2 x Schottel Navigator. 2 x 268 kW

Propellers: 2 x Schottel, retractable

Main Engines (Crane Supply etc):

Deutz type BF12m716, 346 kW, power supply for crane 3 x DC, plus 110 kW AC, 400 Volt 50 Hz.

Auxiliary:

400 kW Volvo, 400 Volt, 50 Hz
250 kW Cummings, 400 Volt, 50 Hz.
100 kVA Iveco. (Port generator)

Deck Equipment:

Spud Legs: 2 x 27 m, hydraulic
Deck Crane: 22 t/m Palfinger, 2 t wire winch
Winches: 2 pcs, each with 2 wire (400m, 22mm)
Anchors: 4 pcs 1500 kg Flipperdelta
1 pc, with chain
Zodiac work boat. Further as required, at stock.

Bridge Equipment:

Radio GMDSS area 1, GPS, Chart plotter, AIS, Sat. Compass. Furuno Radar. Sat. Phone, E-mail.

Passenger accommodation:

2 x 4 cabins

Bow thruster:

400 kW/500 Hp.

Salvage equipment:

Various wires, shackles, bridles, soft slings and ropes. Electrical and diesel driven pumps. Workshop.