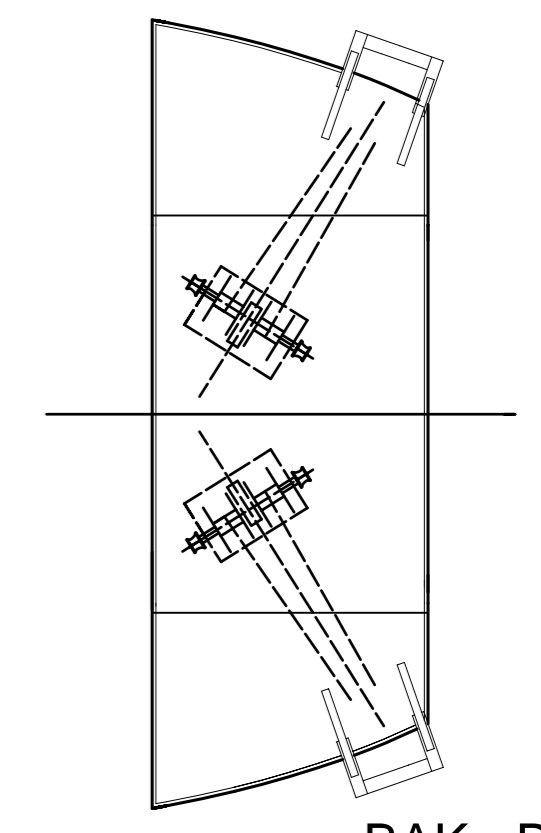
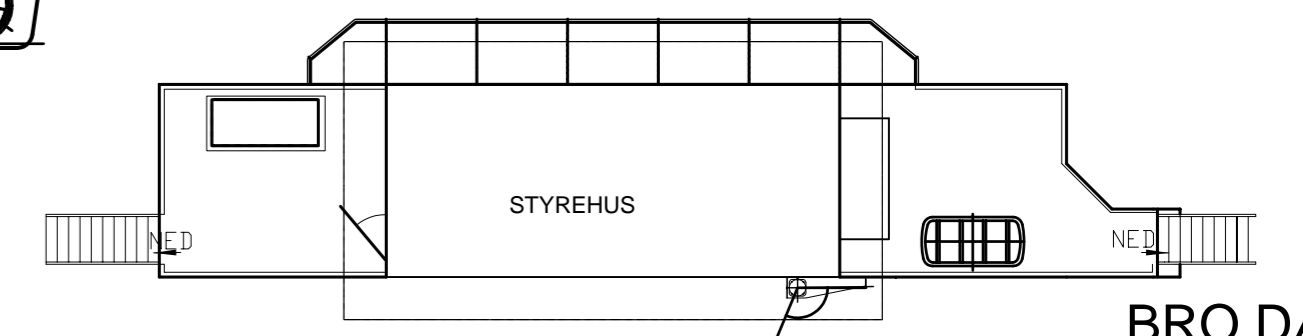


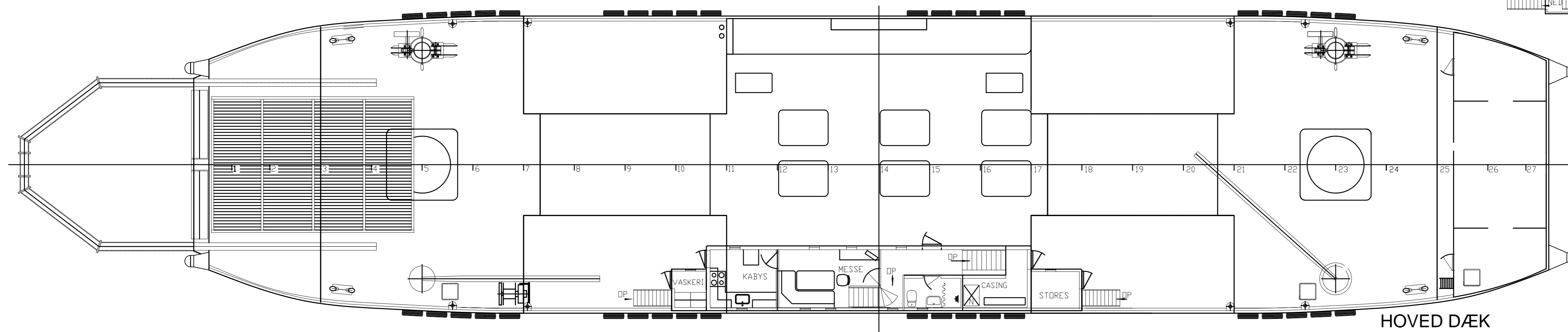
PLATFORM DÆK BB



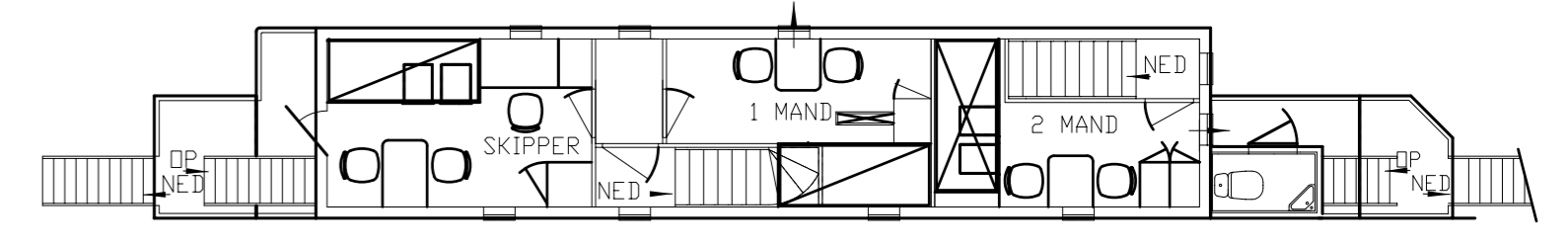
BAK - DÆK



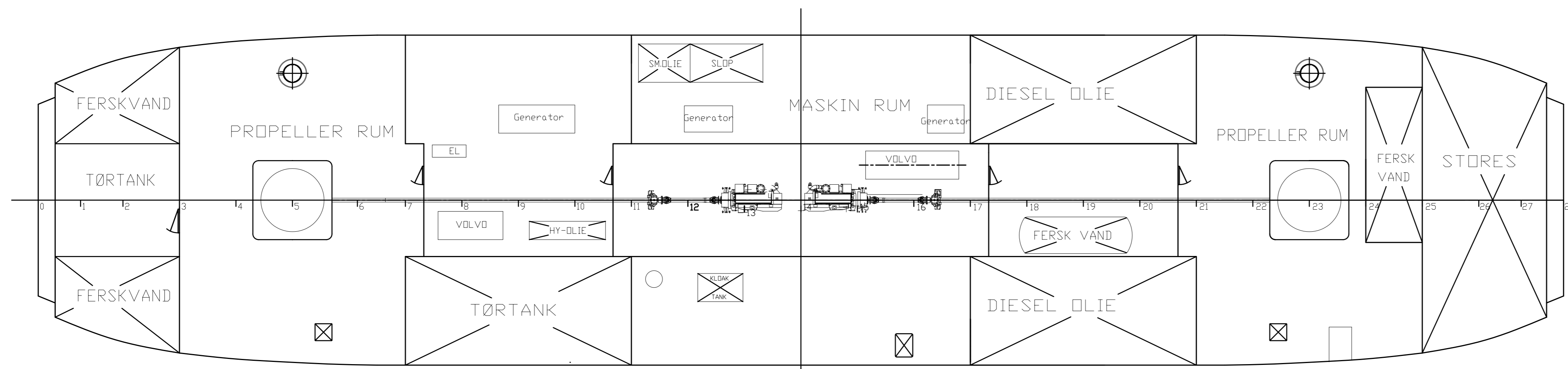
BRØ DÆK



HOVED DÆK



A - DÆK



HOVEDDIMENSIONER:

- LÆNGDE OVER ALT: 53,96 M.
- LÆNGDE I VANDLINIEN: 53,05 M.
- BREDDÉ MOULDED: 11,70 M.
- DYBDE MOULDED: 2,40 M.
- DYBGANG U.K. KØL: 1,60 M.
- DYBGANG U.K. PROPELLER: 2,67 M.

CONSULTING NAVAL ARCHITECTS JENS KRISTENSEN GENERAL ARRANGEMENT M/V SUSANNE A - IMO No. 9099183	Jagtvej 8 DK-5960 Marstal Phn.: +45 6253 3720 Fax: +45 6253 3721	Drawn: MH Date: 20.06.2012 Scale: 1:100
	Drawing no.: JK 336.005.009	Revision: A B C